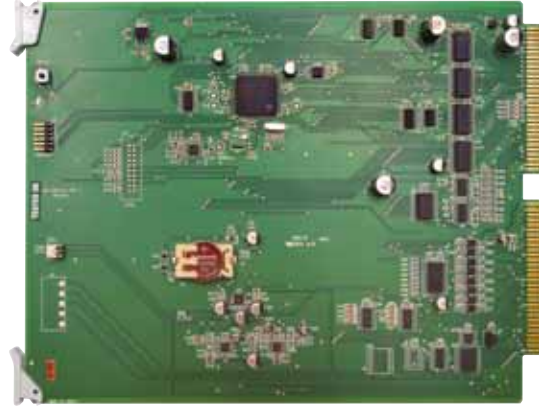


# Multicom 2000®

## Processor Card Model MCPCA3



---

**Description** The Multicom 2000® Model MCPCA3 Processor Card is required to operate the system. This card fits in the first slot of the MCRMF or MCMF Card Cage Assembly. The card contains a micro-controller, with internal FLASH storage memory to hold operating software and system configuration data, and internal RAM to hold operating data. The card is responsible for all system control, tone, and display functions. The card also contains the crystal-controlled real-time clock (with battery backup), relay driver circuits, external function inputs, audio tone synthesizer, and voltage supervisor circuit with reset function.

- 
- Features**
- Contains all system memory
  - RAM Operating data
  - Crystal-controlled clock with battery backup
  - Audio tone synthesizer
  - Tone Level Control
  - External relay drivers
  - Ring/Busy generator
  - UART for enhanced administrative phone functions
  - Dial Tone generator
  - Field Software Upgradable

---

**Architect and Engineer Specifications** One Model MCPCA3 Processor Card shall be required per system. It shall have an advanced micro-controller, and shall provide FLASH memory storage to hold operating software, FLASH memory storage to hold system configuration data, and RAM storage to hold operating data. The card shall be responsible for all system control, tone, and display functions.

The card shall also contain the crystal-controlled real-time clock (with battery backup), relay input and output driver circuits, external function inputs, audio tone synthesizer, and voltage supervisor circuit with reset function. The card shall be installed in the first slot of the MCRMF or MCMF Card Cage Assembly. The card shall be field software upgradeable.

---

**Technical Specifications**

**Dimensions:** 10-9/16" W x 8-1/8" H x 5/8" D

**Power:** MC512A Power Supply (sold separately)